

# CANTERBURY COURT, ASSISTED LIVING PROJECT

3750 PEACHTREE RD NE, ATLANTA, GA 30319

WEI-JOU, CHIEN | PROF. JONES

Interior Design Studio II: Specialized Interior Environments



# TABLE OF CONTENTS

PHASE 1 RESEARCH AND PROGRAMMING

CLIENT PROFILE	P101 - 102
CLIENT NEEDS	P103
RESIDENT NEEDS	P104 - 108
ANALYSIS	P109 - 110
PROGRAMMING	P111 - 113

PHASE 2 SCHEMATIC DESIGN

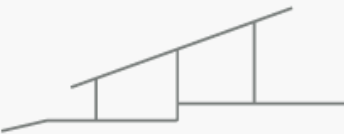
CONCEPT GRAPHICS / DIAGRAMS	P201
CONCEPT STATEMENT	P202 - 203
SCHEMATIC PLAN	P204 - 212

PHASE 3 DESIGN DEVELOPMENT

UPDATED DIAGRAMS	P301
FLOOR PLAN	P302
REFLECTED CEILING PLANS	P303
ELEVATIONS	P304
VOLUMETRIC STUDIES	P305
FINAL RENDERED FLOOR PLAN	P306
FINAL RCP	P307
FINAL ELEVATIONS	P308
FINAL PERSPECTIVES	
FINAL FINISHES AND FF &E	

REFERENCES	P401
------------	------





# /PHASE 1: RESEARCH AND PROGRAMMING

CLIENT PROFILE	P101 - 102
CLIENT NEEDS	P103
RESIDENT NEEDS	P104 - 108
ANALYSIS	P109 - 110
PROGRAMMING	P111 - 113

# CANTERBURY COURT PROFILE

**CANTERBURY COURT** *Where lives blossom*  
**3750 PEACHTREE RD NE, ATLANTA, GA 30319**

Atlanta's first non-profit Continuing Care Retirement Community (CCRC)

## HISTORY:

Founded in 1965 by Frank Player and Margaret Hancock, Canterbury Court in Atlanta, GA, was Atlanta's first Life Plan Community. Their vision aimed to provide joyful living for older adults with independent living and access to assisted living and skilled nursing as needed.

## MISSION:

Canterbury Court's mission is to weave together the lives of residents, associates, family members, and community partners, creating a beautiful and intricate tapestry that defines the essence of Canterbury Court

## VISION:

The retirement community's vision is to cultivate lives of purpose and possibility for its residents. It strives to help residents lead meaningful lives, fostering social connections, facilitating learning, and providing opportunities for new experiences.

## CULTURE:

Canterbury Court distinguishes itself with its vibrant and welcoming culture, characterized by Southern hospitality. The intimate size of the community fosters social and even spiritual connections among residents. The sense of belonging and comfort creates a feeling of home for residents.

## NEIGHBORHOOD:

In front is the energy of Buckhead, in back are nearly six acres of tranquil gardens



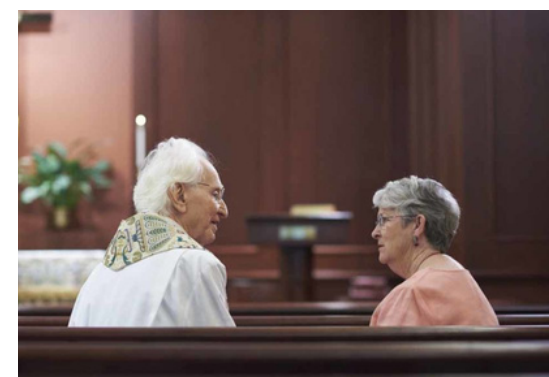
CANTERBURT COURT



MULTIPLE DINING OPTIONS



FITNESS PROGRAMS



CHAPEL



WOODWORKING SHOP



# RESIDENT DEMOGRAPHICS

## AVERAGE AGE:

84 years old.

## GENDER:

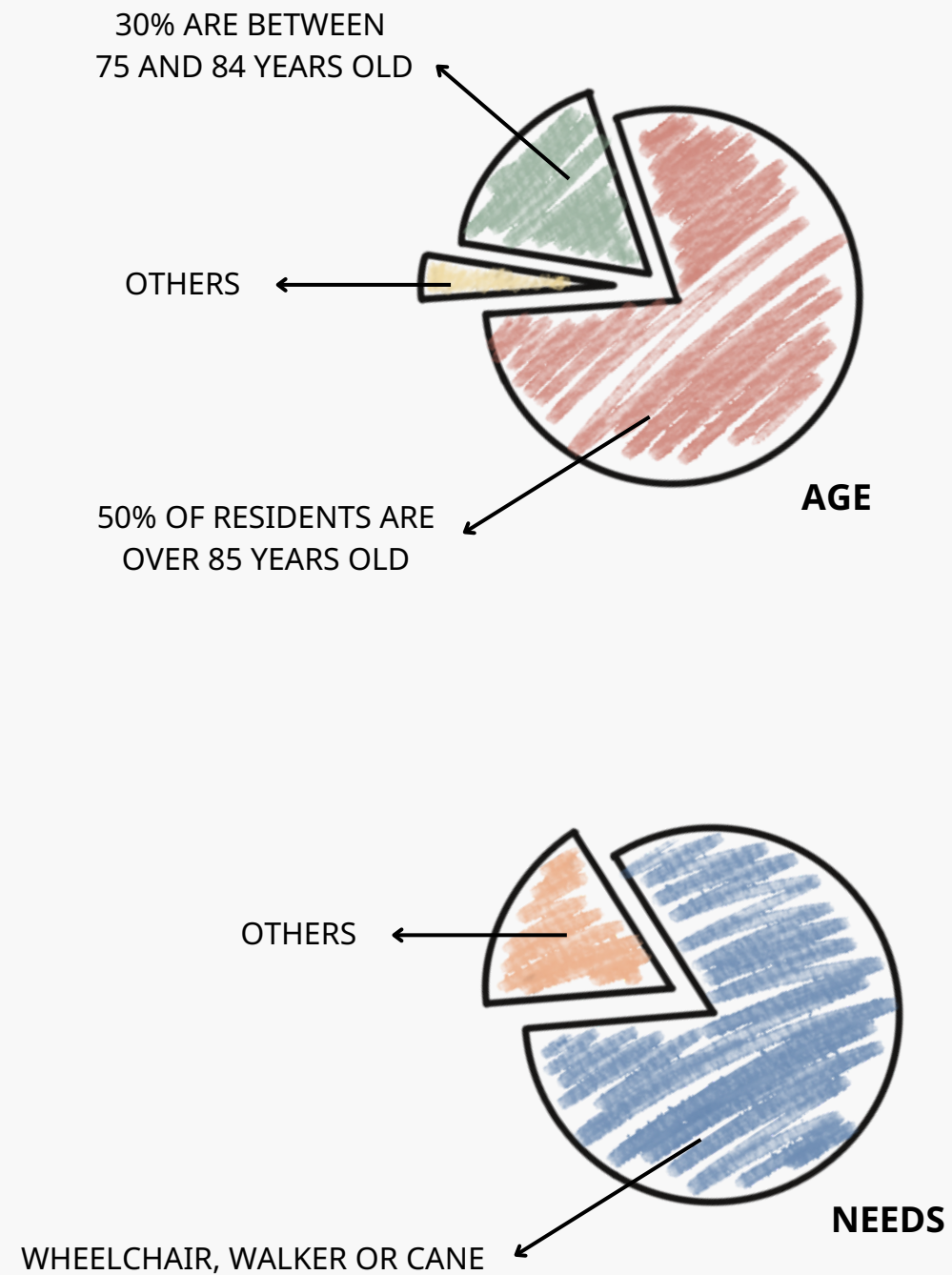
70% of the residents are female, 30% are male.

## HEALTH ISSUES:

Arthritis, sight/ hearing impairments, early dementia, body pain, etc.

## HOBBIES:

Outdoor activities, swimming, gardening, crafts, reading, etc.



# CLIENT REQUESTED AREA

**SECONDARY RECEPTION AREA WITH HELP DESK :** Must be adjacent to elevators and connection to other towers.

**EATING AREA :** Include a variety of seating types to accommodate a minimum of 32 people. Not a primary dining space, but an area with a kitchenette to allow for small gatherings and provide a place to eat takeout with family. Minimum of 8'-0" long. Access to natural light preferred.

**GAMING AREA :** Include gaming tables and potential a pool table/foosball table.

**LOUNGING SPACE :** With seating for a minimum of 16 people; Ideally located near Secondary Reception Area and natural light.

**LIBRARY :** Include book stacks and lounge seating for 6

**YOGA/MEDITATION SPACE :** Include space for 8 matts; Must have an area with a mirror and a storage solution for matts and blocks, as well as a design that accommodate meditation or prayer space; Natural light is preferred, but privacy from other areas is ideal.

**THEATER/VIEWING SPACE :** Include seating for 8 to 10 people; Should be enclosed to allow light control for viewing movies.

**RESTROOMS :** Six, single use ADA compliant spaces. These cannot be placed on any glass.

**OUTDOOR SPACE :** Include areas for intimate conversation with family.

**MECHANICAL ROOM :** Provide 25 SF

**STORAGE AREA :** Small, must accommodate janitor supplies for cleaning and restocking restrooms and kitchenette. Must include a small mop sink.



# PROJECT GOALS

## **PRIVACY:**

Residents can choose private rooms or apartments, each equipped with a bathroom and a small kitchenette. Soundproofing between units ensures privacy.

## **NEEDS:**

Adaptable living spaces accommodate changing needs with features like adjustable furniture and accessible bathrooms.

## **USER FRIENDLY:**

Wheelchair-accessible layouts and wide hallways with clear signage ensure ease of navigation.

## **SAFETY & SECURE:**

Prioritizing residents' safety, this senior living space features controlled access, security cameras, emergency call systems, fall prevention measures, and comprehensive fire safety.

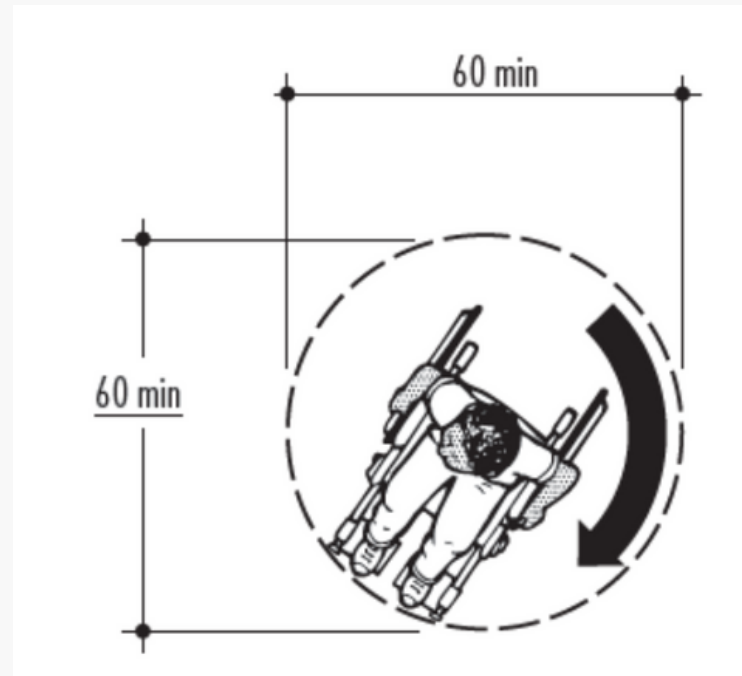
## **COMPREHENSIVE CARE:**

Dedicated wings or floors provide assisted living and memory care units. On-site medical services and clinics are available through collaborations with healthcare providers. Wellness programs encompass fitness centers and therapy rooms.

## **SOCIAL INTERACTION:**

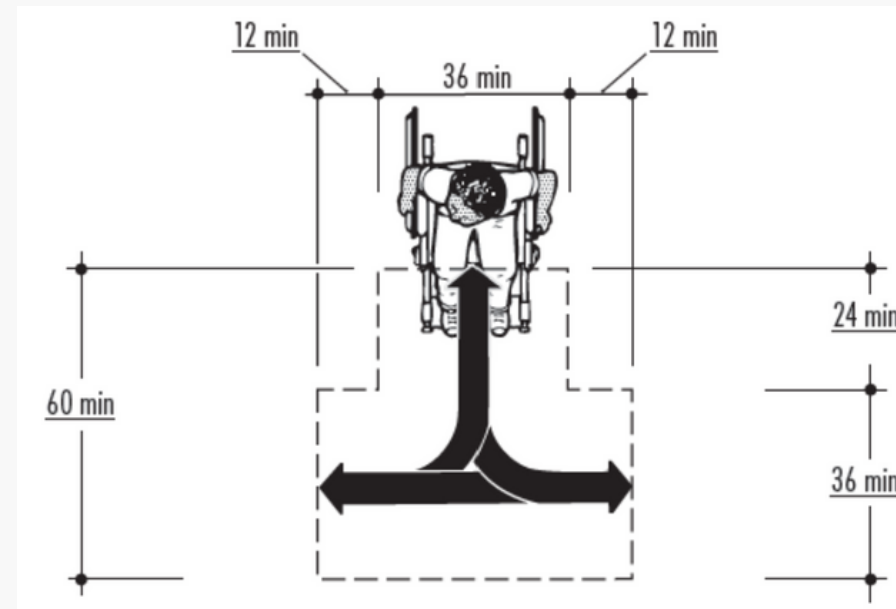
At the heart of the community is a vibrant hub that includes a library, game room, and multipurpose event space. Outdoors, landscaped gardens, walking paths, and seating areas encourage outdoor socialization, complemented by a communal dining hall for shared meals.

# HUMAN FACTORS



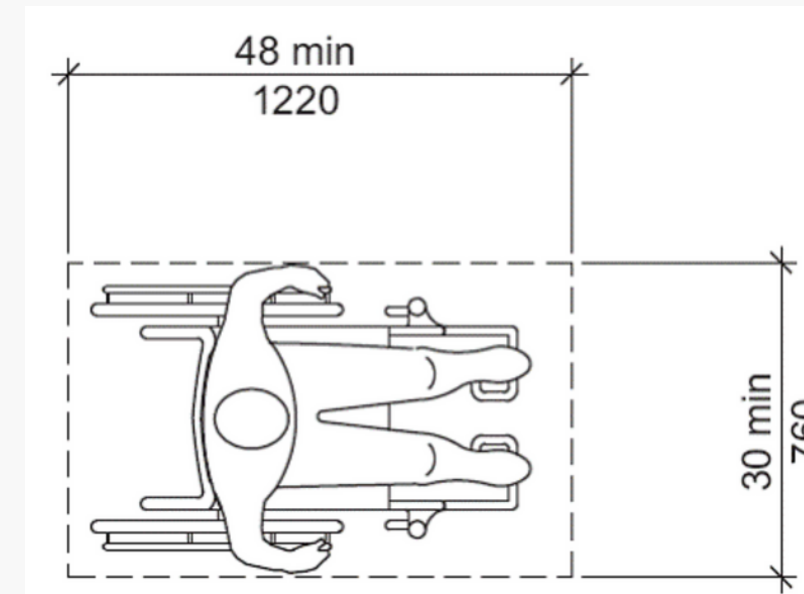
## CIRCULAR SPACE

The turning space shall be a space of 60 inches (1525 mm) diameter minimum. The space shall be permitted to include knee and toe clearance complying with 306.



## T-SHAPED SPACE

The turning space shall be a T-shaped space within a 60 inch (1525 mm) square minimum with arms and base 36 inches (915 mm) wide minimum. Each arm of the T shall be clear of obstructions 12 inches (305 mm) minimum in each direction and the base shall be clear of obstructions 24 inches (610 mm) minimum. The space shall be permitted to include knee and toe clearance complying with 306 only at the end of either the base or one arm.

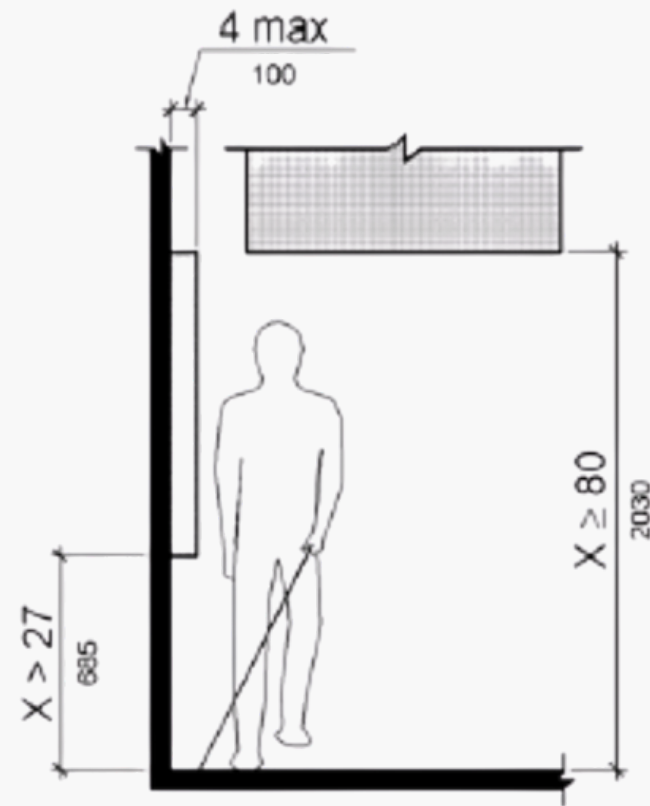


## SIZE

The clear floor or ground space shall be 30 inches (760 mm) minimum by 48 inches (1220 mm) minimum

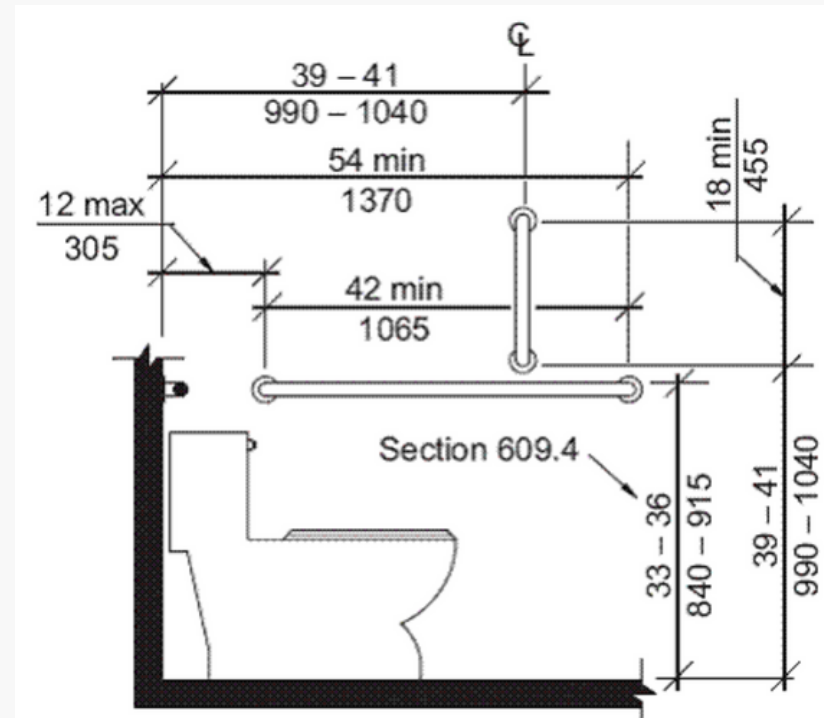


# HUMAN FACTORS



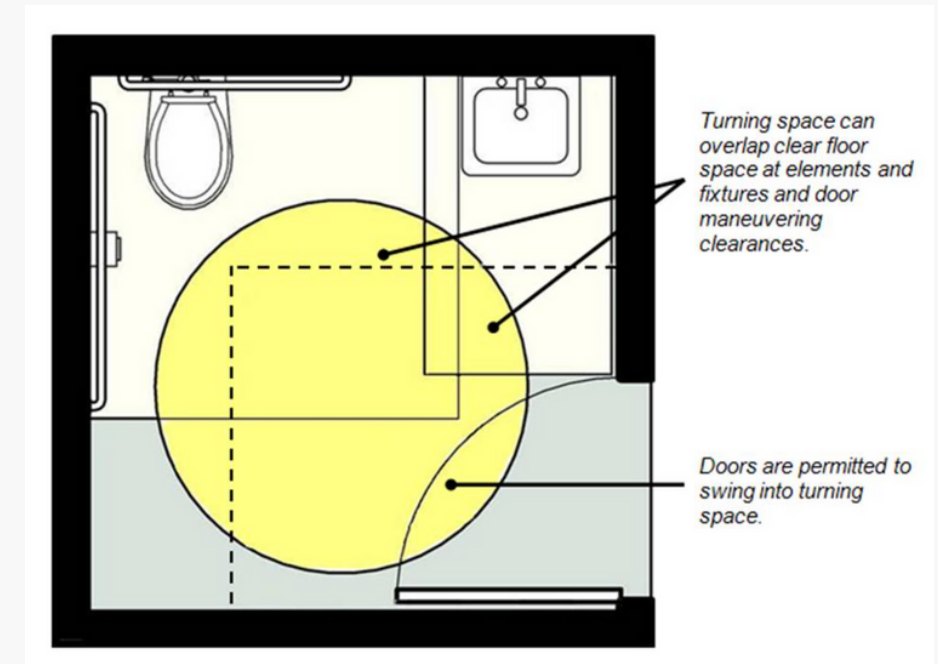
## PROTRUSION LIMITS

Objects with leading edges more than 27 inches (685 mm) and not more than 80 inches (2030 mm) above the finish floor or ground shall protrude 4 inches (100 mm) maximum horizontally into the circulation path.



## GRAB BARS

Grab bars for water closets shall comply with Section 609 and shall be provided in accordance with Sections 604.5.1 and 604.5.2. Grab bars shall be provided on the rear wall and on the side wall closest to the water closet.



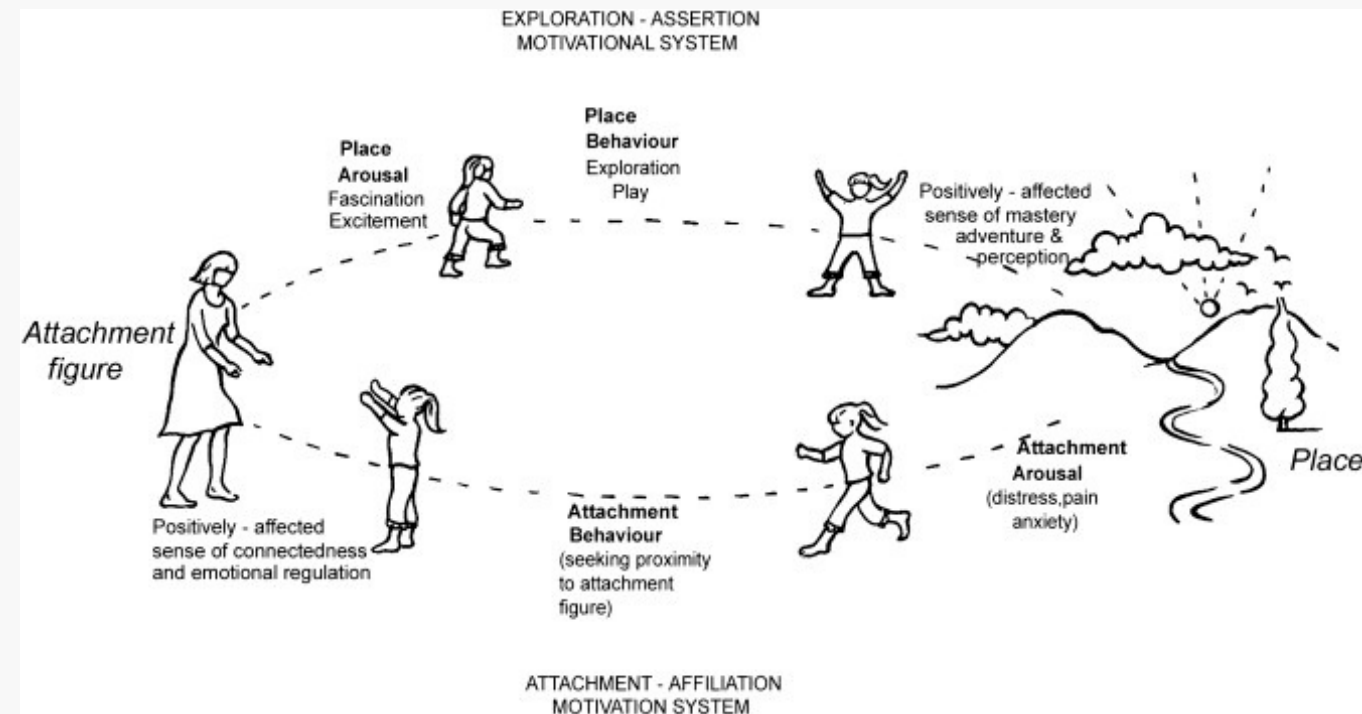
## DOOR SWING

Doors shall be permitted to swing into turning spaces.

# INTERIOR DESIGN THEORIES

## PLACE ATTACHMENT THEORY

Place attachment theory is a psychological and sociological concept that focuses on the emotional bonds and connections that individuals develop with specific places. It explores the ways in which people form attachments to the environments and spaces they inhabit, and how these attachments can influence their behaviors, attitudes, and well-being.



### EMPHASIZING COMFORT AND WELL-BEING:

Prioritize comfort, functionality, and well-being in their designs. Spaces that promote physical and emotional comfort are more likely to foster attachment. This may include considerations such as ergonomic furniture, lighting, and acoustics.

### PERSONALIZATION AND CUSTOMIZATION:

Work with clients or allow them to personalize and customize interior spaces to align with their preferences, interests, and memories. By incorporating elements that hold personal significance to the occupants, designers can strengthen the attachment individuals have to their living or working spaces.



# INTERIOR DESIGN THEORIES

## BIOPHILIA

Biophilia in interior design is a concept that emphasizes the integration of natural elements and the incorporation of nature-inspired design principles within interior spaces. The goal is to create environments that promote well-being, reduce stress, and enhance the overall quality of life for occupants by connecting them with nature, even in urban or indoor settings.



## NATURAL MATERIALS:

Using natural materials like wood, stone, bamboo, and cork in interior finishes, furniture, and decor can bring the look and feel of the outdoors into indoor spaces. These materials add texture and warmth to the environment.

## WATER FEATURES:

The inclusion of water features like fountains, ponds, or aquariums can evoke feelings of tranquility and relaxation. The sound of flowing water can be particularly soothing.

# ANALYSIS RESEARCH

## 私がつくる街—— シェア金沢 SHARE KANAZAWA

SE-104-1 WAKAMATSUMACHI, KANAZAWA, ISHIKAWA 920-1165, JAPAN

Japan's "mixed" living community for healthy aging

### INFORMATION:

Twenty-five mixed-use buildings, including child welfare facilities, serviced rental housing for the elderly, hot tub facilities, after-school nurseries and shops, are randomly mixed together to form a town where everyone can live without discrimination. The building takes advantage of the existing greenery on the site and is a one- or two-story building dominated by wooden structures.

### FRIENDS AND FAMILY:

The concept of Share Kanazawa in Japan is truly inspiring. It brings together older adults and youths with special needs, allowing them to form meaningful bonds and create a supportive community. Through various activities like volunteering, working in on-site businesses, utilizing the sports gymnasium, tending to gardens, or simply taking a walk on the expansive 3.6-hectare property, residents become like a big family. This initiative not only reduces social isolation but also promotes intergenerational relationships, making a positive impact on the lives of all involved, fostering a sense of belonging and support within this diverse and inclusive community.

### FEATURED:

Clothing cleaning, Outdoor hot spring, GAIA Nature Communication, Public Sports System Institute, Thai style message, Groovy Planning & Creative, Cafe & Live house, Kato Kitchen Studio, Ukulele learning, youths with special needs housing, home garden and farm.



SHARE KANAZAWA EXTERIOR



SOCIAL AREA



OUTDOOR HOTSPRING



LIVING AREA INTERIOR



# ANALYSIS RESEARCH



**VILLAGE LANDAIS ALZHEIMER**  
**RUE PASCAL LAFITTE, 40100 DAX, FRANCE**

Japan's "mixed" living community for healthy aging

## INFORMATION:

The Village is inspired by traditional Landes architecture and operates as a genuine community where residents have great freedom of movement. Led by the Franco-Danish project management team Champagnat & Grégoire (Landes) and Nord Architects (Copenhagen), the village centers around a central hub, the Bastide. The project prioritizes natural lighting, sustainability, and cost-effective operation in its design. It also focuses on exceptional energy efficiency, user comfort, and long-term environmental sustainability.

## MEDICAL:

Doctors, physiotherapists, speech therapists, psychologists, occupational therapists, etc., can practice in premises adapted to the needs of residents (gym, infirmary, sensory space, etc.).

## FEATURED:

All living and exercise spaces are available for residents, staff and volunteers. Shops and services are at your disposal: activity room, media library, auditorium, gym, hairdressing salon, grocery store and brasserie.

## SPECIAL:

Temporary accommodation is notably available for family members of residents or researchers accompanying the Village study.



VILLAGE LANDSCAPED



LA BASTIDE

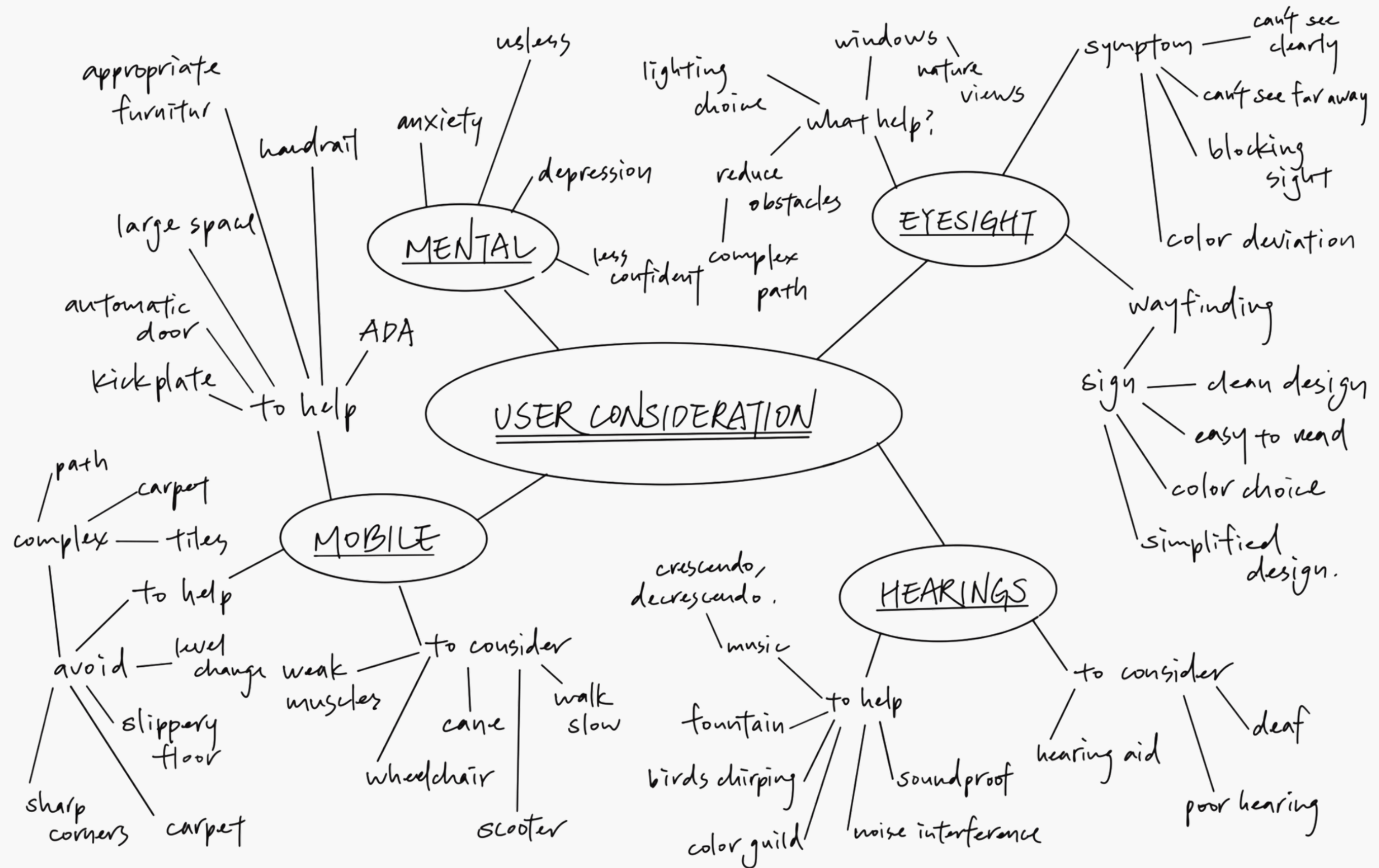


CAFÉ-RESTAURANT



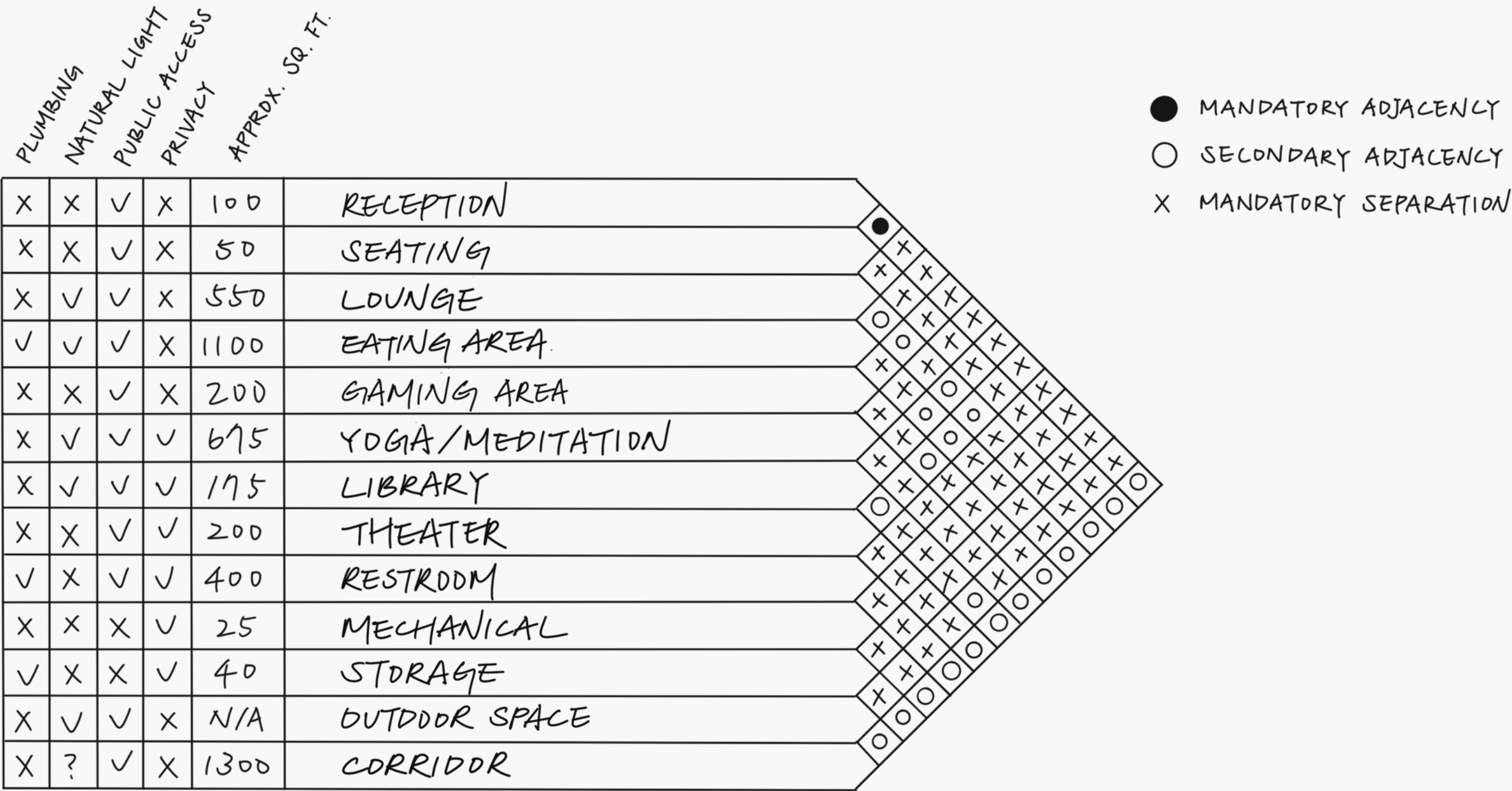
THE NEIGHBORHOODS

# MIND MAP

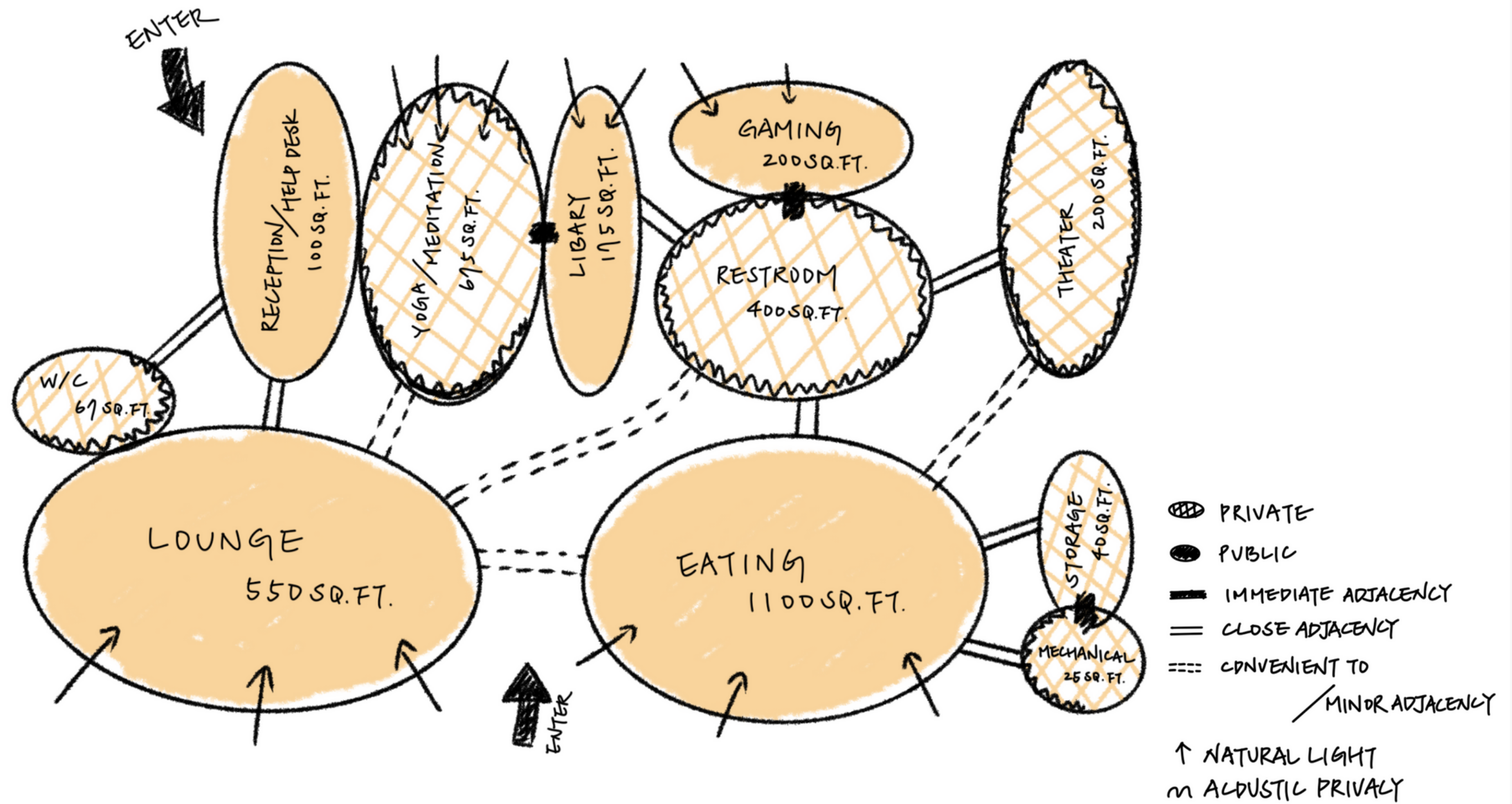


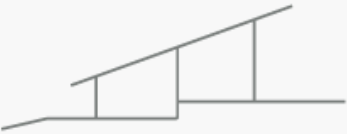


MATRIX



# BUBBLE DIAGRAM





# **/PHASE 2: SCHEMATIC DESIGN**

CONCEPT GRAPHICS / DIAGRAMS

P201

CONCEPT STATEMENT

P202 - 203

SCHEMATIC PLAN

P204 - 212



# MOOD/ VISION BOARD





# CONCEPT STATEMENT

**Biophilia, the innate human connection to nature, is a universal force that contributes to a peaceful, secure environment where everyone, regardless of age or identity, can thrive. The goal is to seamlessly integrate nature into our surroundings, recognizing its profound positive impact on our well-being and quality of life**

## **HALCYON**

Establishing a tranquil setting that enables residents to remain in a space where they can enjoy a lifelong sense of safety and security.

## **EQUALIZE**

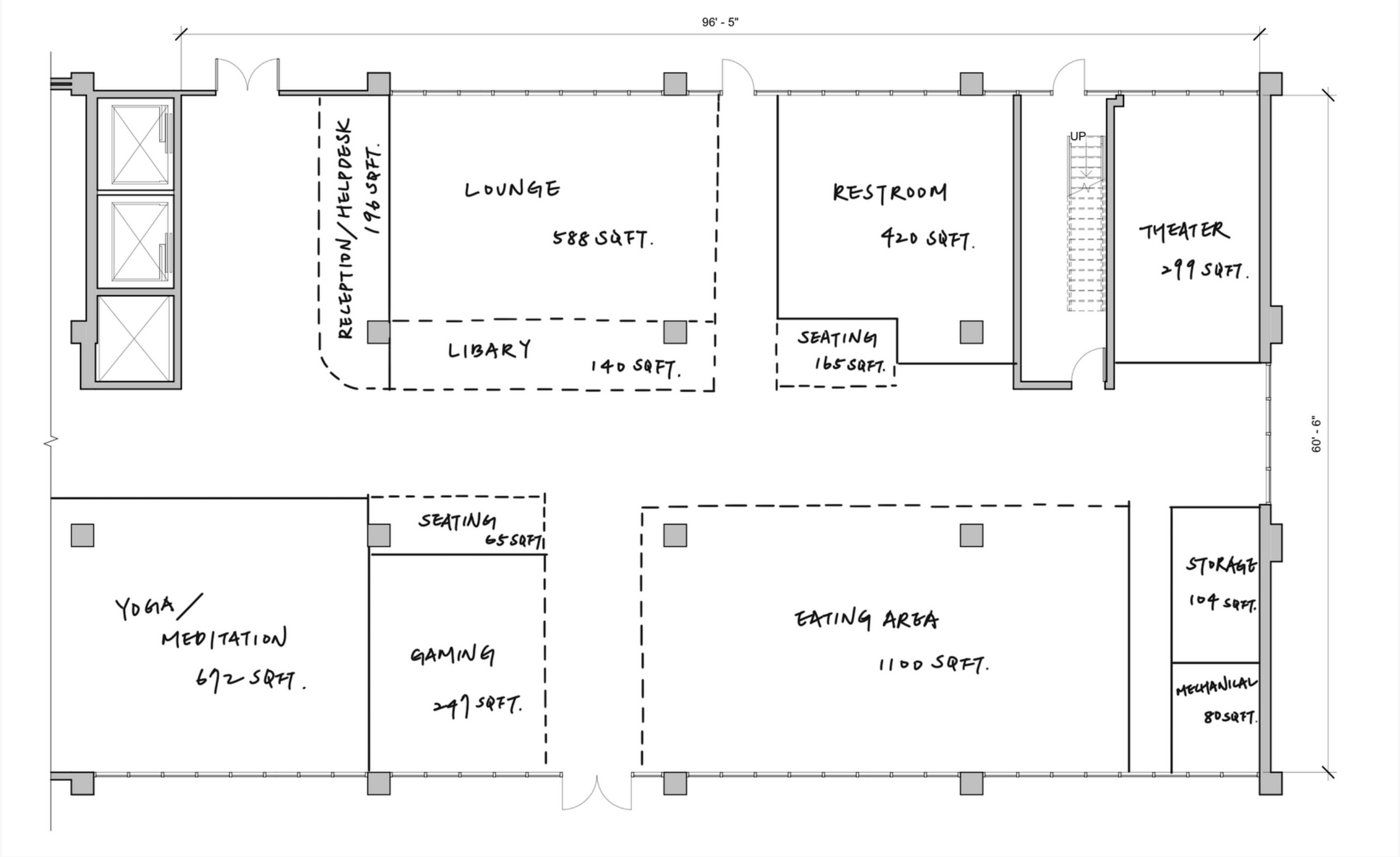
Fostering an environment that promotes equality among all its members, where there is no shame in being an older person or being true to oneself.

## **NATURE**

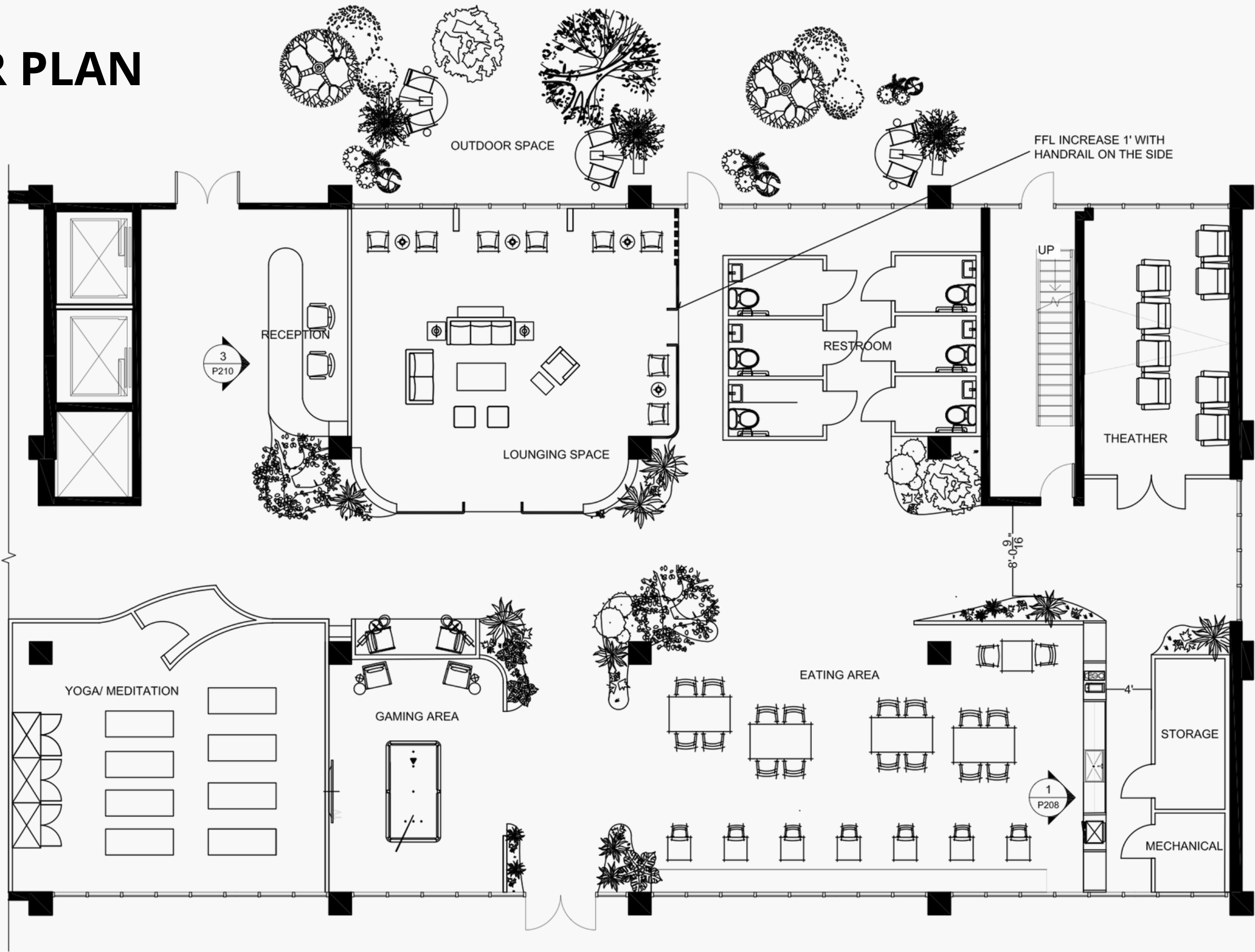
Biophilia unquestionably benefits everyone, and the aim is to incorporate nature into the environment.



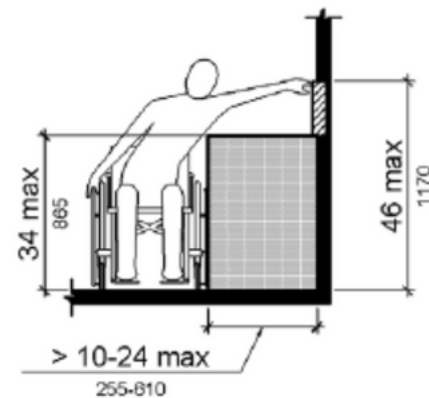
# BLOCK PLAN



# FLOOR PLAN

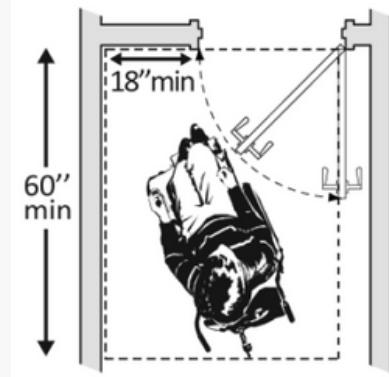


# ADA PLAN



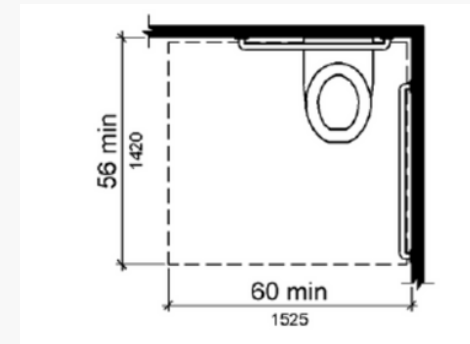
### 308.3 SIDE REACH

Where a clear floor or ground space allows a parallel approach to an element and the high side reach is over an obstruction, the height of the obstruction shall be 34 inches (865 mm) maximum and the depth of the obstruction shall be 24 inches (610 mm) maximum.



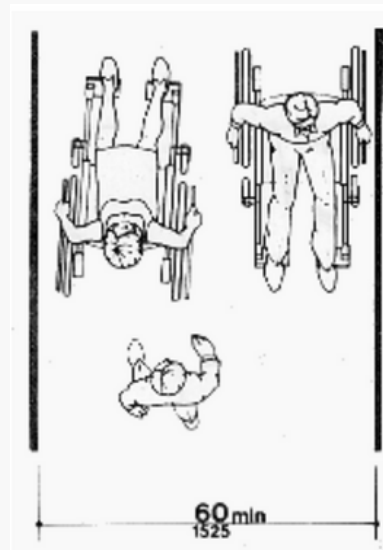
### 603.2.3 DOOR SWING

Doors shall not swing into the clear floor space or clearance required for any fixture. Doors shall be permitted to swing into the required turning space.



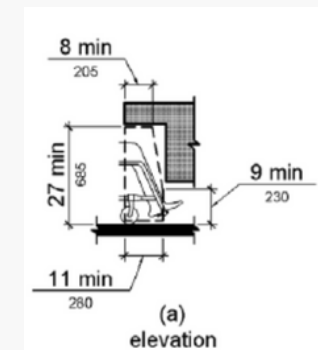
### 604.3.1 SIZE

Clearance around a water closet shall be 60 inches (1525 mm) minimum measured perpendicular from the side wall and 56 inches (1420 mm) minimum measured perpendicular from the rear wall.



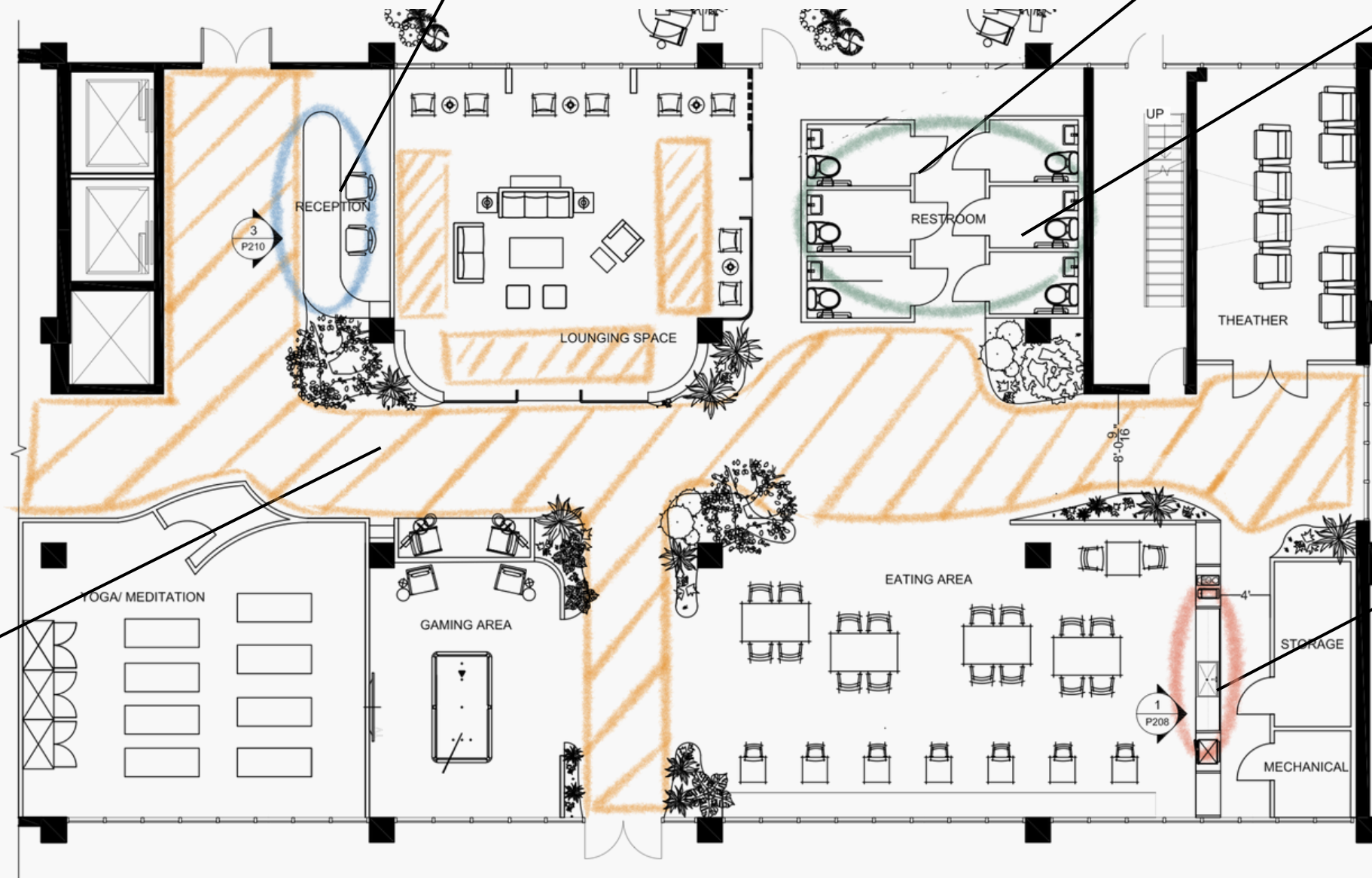
#### 4.2.2 WIDTH FOR WHEELCHAIR PASSING

The minimum width for two wheelchairs to pass is 60 in (1525 mm)



### 306.3 KNEE CLEARANCE

Where knee clearance is required under an element as part of a clear floor space, the knee clearance shall be 11 inches (280 mm) deep minimum at 9 inches (230 mm) above the finish floor or ground, and 8 inches (205 mm) deep minimum at 27 inches (685 mm) above the finish floor or ground.





# WELL PLAN



## BIOPHILIC ELEMENTS

boost well-being, reduce stress, enhance creativity, and improve air quality, all while fostering a connection to nature and creating visually appealing, energy-efficient spaces.

## NATURE LIGHT

elevate mood, increase productivity, and reduce the requirement for artificial lighting, all while establishing a connection to the outdoors.

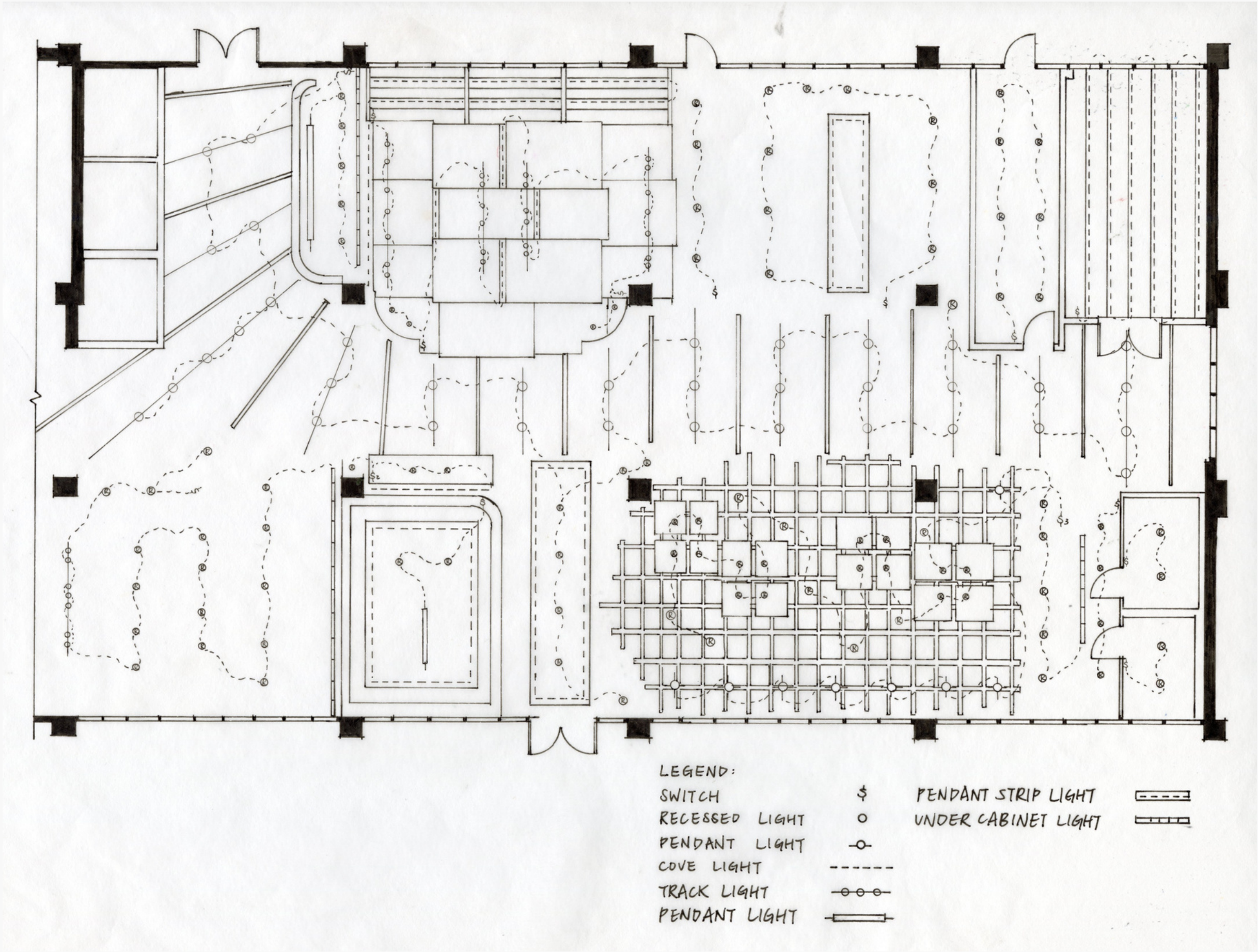
## COMFORTABLE SEATING

cozy and inviting atmosphere, making the space more relaxing and enjoyable.

## SOCIOPETAL ARRANGMENT

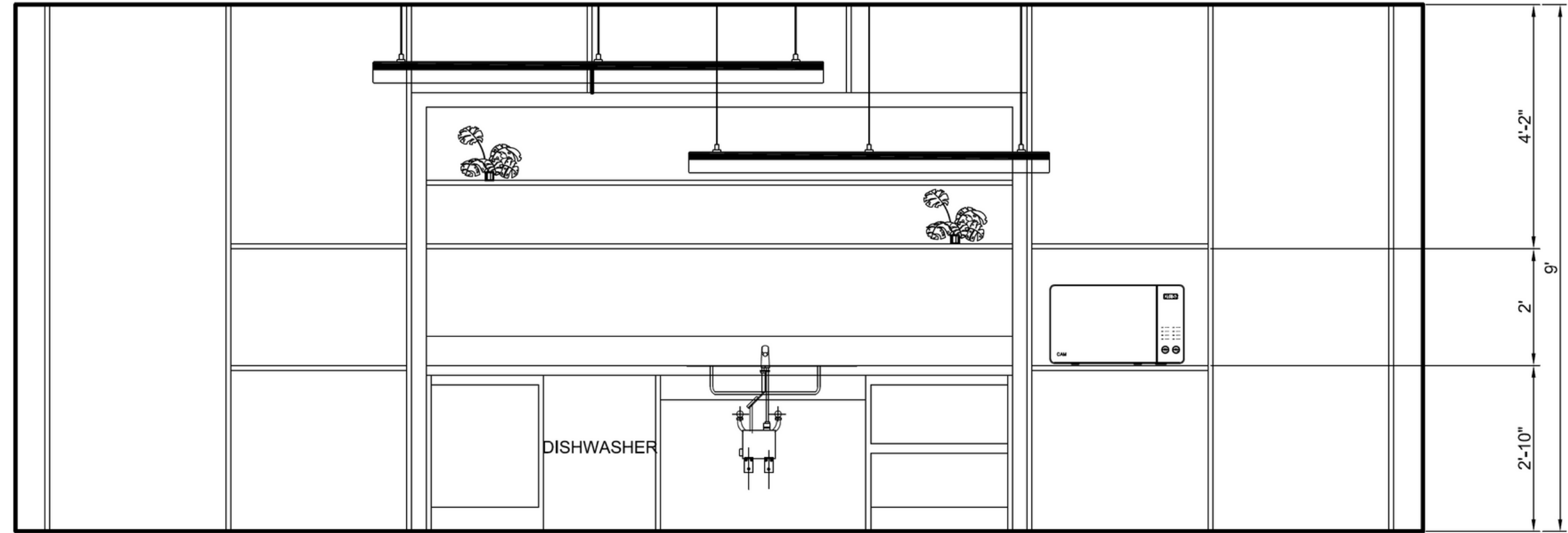
encourage and facilitate social interaction among individuals by bringing them closer together in a space.







# ELEVATION



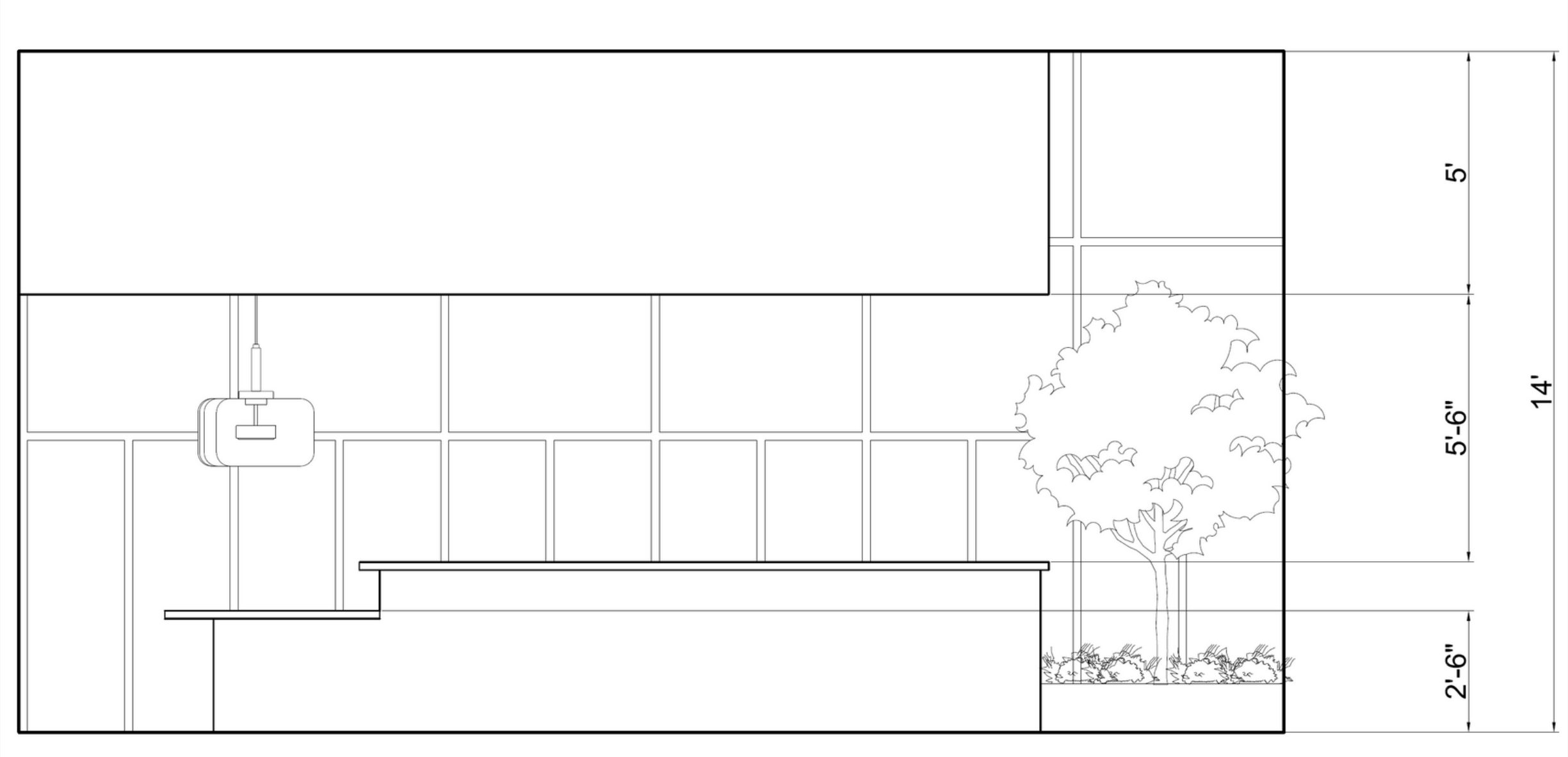
KITCHENETTE

# ELEVATION



RESIDENT FLOOR CORRIDOR

# ELEVATION



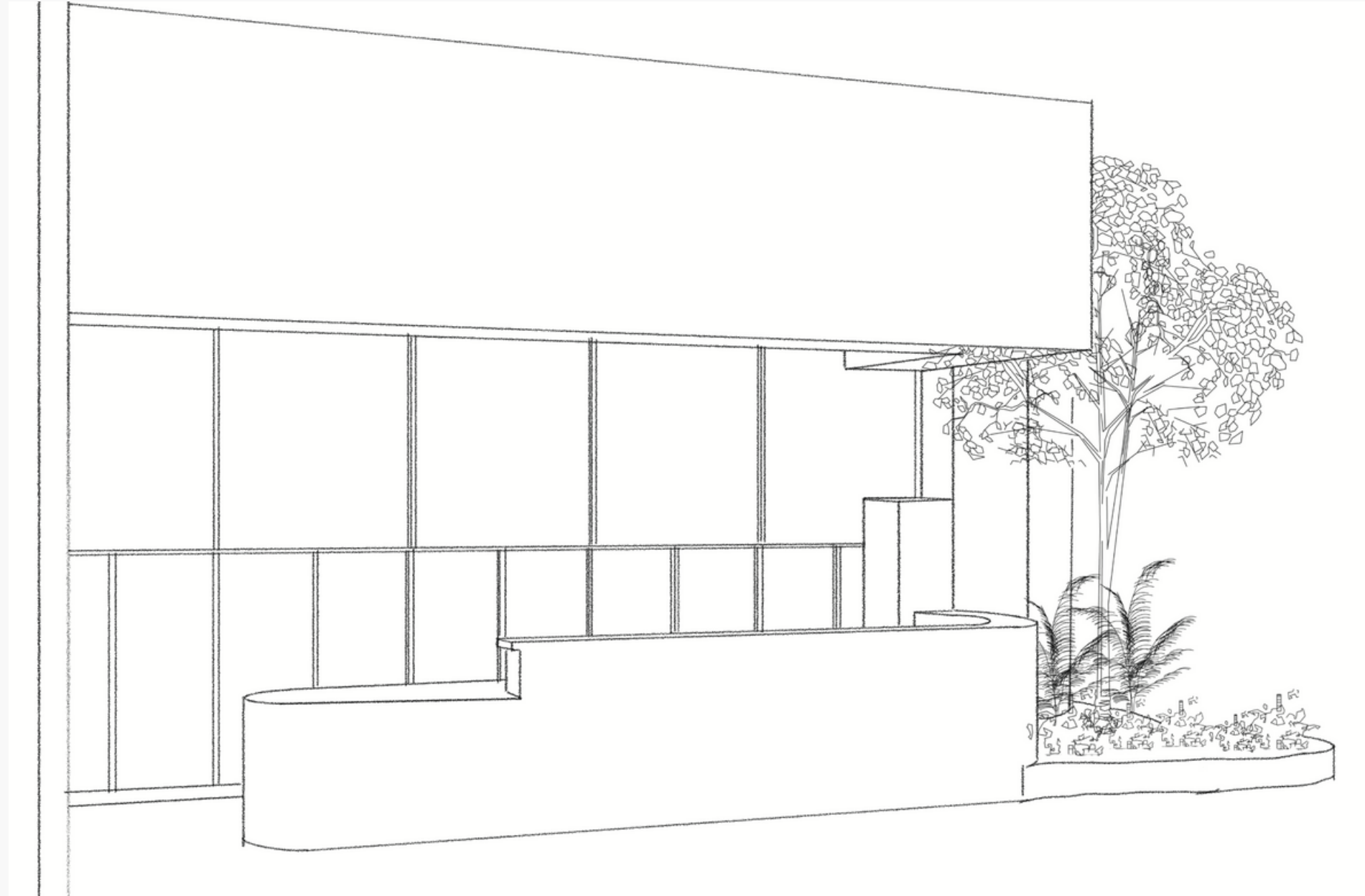
RECEPTION DESK

# VOLUMETRIC STUDIES



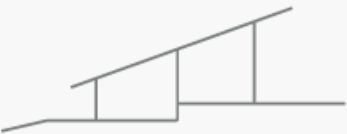
KITCHENETTE

# VOLUMETRIC STUDIES



RECEPTION DESK





# /PHASE 3 DESIGN DEVELOPMENT

CONCEPT/ MOOD	P301 - 302
ADA/ WEEL PLAN	P303 - 304
FINAL RENDERED FLOOR PLAN	P305
FINISHES AND FF &E	P306
FINAL RCP	P307
SECTIONS	P308 - 309
FINAL ELEVATIONS	P310 - 312
FINAL PERSPECTIVES	P313 - 315

# CONCEPT STATEMENT

**Biophilia, the innate human connection to nature, is a universal force that contributes to a peaceful, secure environment where everyone, regardless of age or identity, can thrive. The goal is to seamlessly integrate nature into our surroundings, recognizing its profound positive impact on our well-being and quality of life**

## **HALCYON**

Establishing a tranquil setting that enables residents to remain in a space where they can enjoy a lifelong sense of safety and security.

## **EQUALIZE**

Fostering an environment that promotes equality among all its members, where there is no shame in being an older person or being true to oneself.

## **NATURE**

Biophilia unquestionably benefits everyone, and the aim is to incorporate nature into the environment.

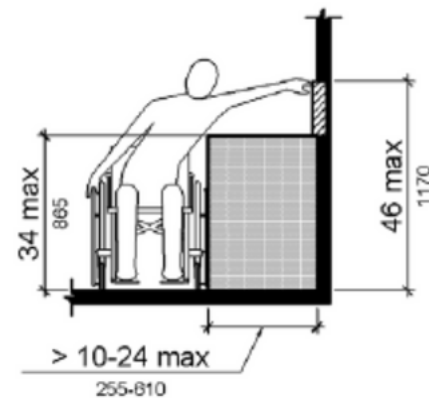


# MOOD/ VISION BOARD



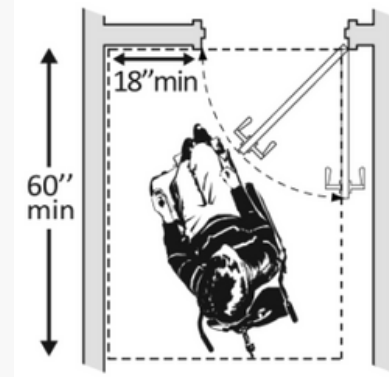


# ADA PLAN



### 308.3 SIDE REACH

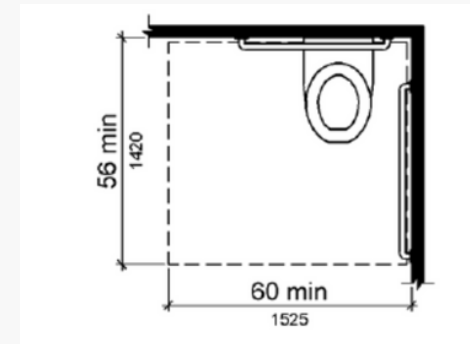
Where a clear floor or ground space allows a parallel approach to an element and the high side reach is over an obstruction, the height of the obstruction shall be 34 inches (865 mm) maximum and the depth of the obstruction shall be 24 inches (610 mm) maximum.



### 603.2.3 DOOR SWING

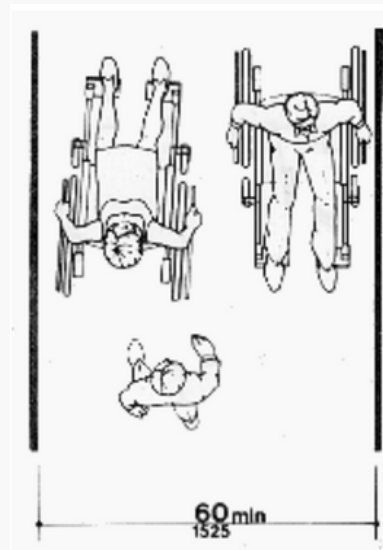
Doors shall not swing into the clear floor space or clearance required for any fixture.

Doors shall be permitted to swing into the required turning space.



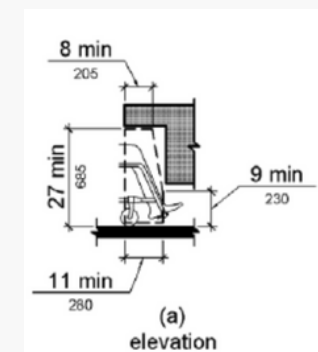
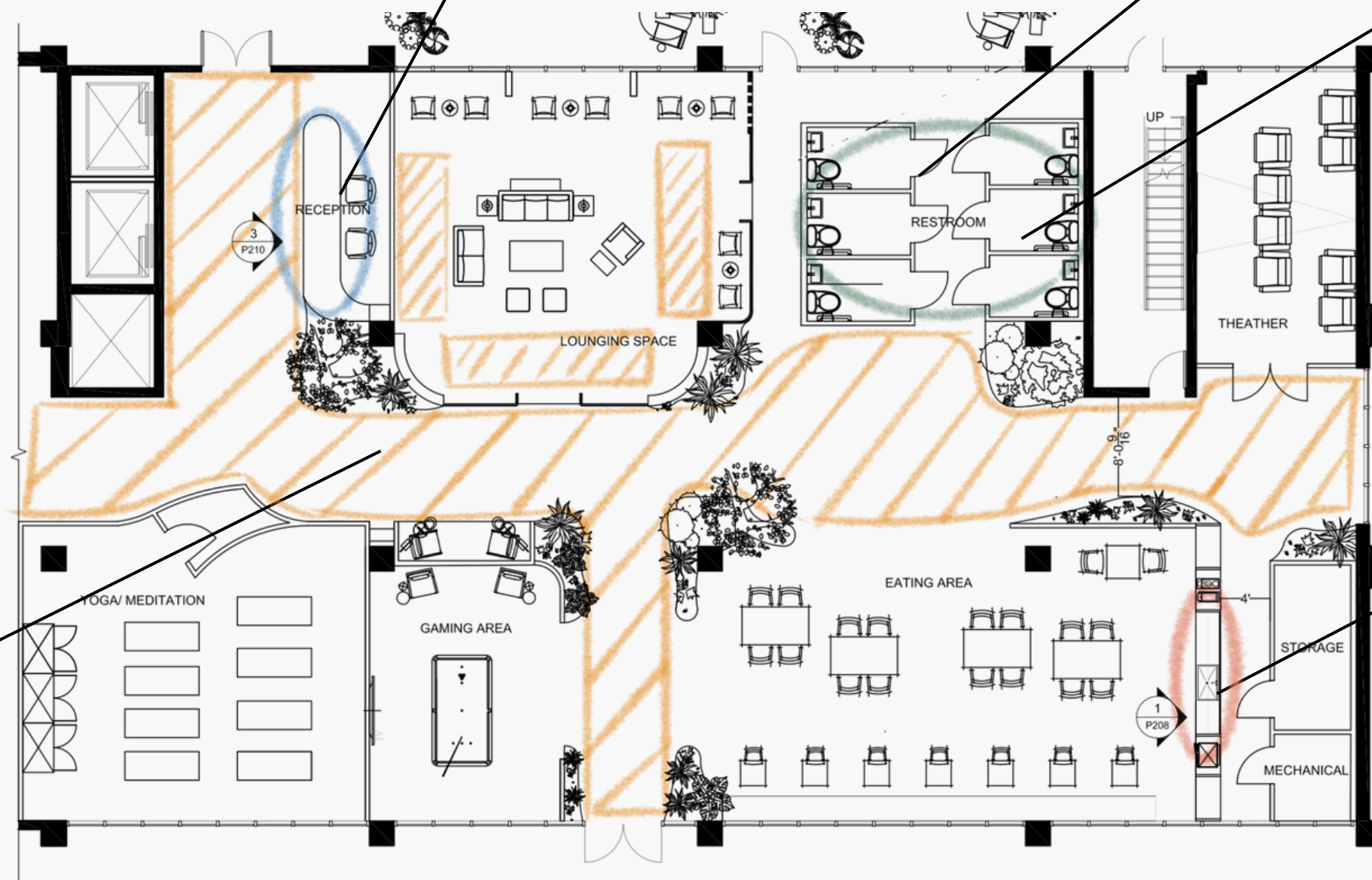
### 604.3.1 SIZE

Clearance around a water closet shall be 60 inches (1525 mm) minimum measured perpendicular from the side wall and 56 inches (1420 mm) minimum measured perpendicular from the rear wall.



#### 4.2.2 WIDTH FOR WHEELCHAIR PASSING

The minimum width for two wheelchairs to pass is 60 in (1525 mm)



### 306.3 KNEE CLEARANCE

Where knee clearance is required under an element as part of a clear floor space, the knee clearance shall be 11 inches (280 mm) deep minimum at 9 inches (230 mm) above the finish floor or ground, and 8 inches (205 mm) deep minimum at 27 inches (685 mm) above the finish floor or ground.



# WELL PLAN



## BIOPHILIC ELEMENTS

boost well-being, reduce stress, enhance creativity, and improve air quality, all while fostering a connection to nature and creating visually appealing, energy-efficient spaces.

## NATURE LIGHT

elevate mood, increase productivity, and reduce the requirement for artificial lighting, all while establishing a connection to the outdoors.

## COMFORTABLE SEATING

cozy and inviting atmosphere, making the space more relaxing and enjoyable.

## SOCIOPETAL ARRANGMENT

encourage and facilitate social interaction among individuals by bringing them closer together in a space.

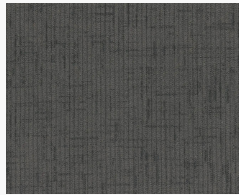


# FINAL FLOOR PLAN





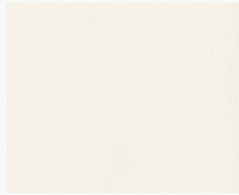
# FURNITURE SELECTION



**FLOORING/ CARPET**  
CLASS 1 FLAMMABILITY  
ADA COMPLIANT



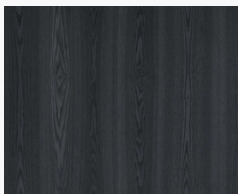
**SOFA UPHOLSTERY**  
100% SOLUTION DYED ACRYLIC  
STAIN & WATER REPELLENT  
HEAVY DUTY DURABILITY



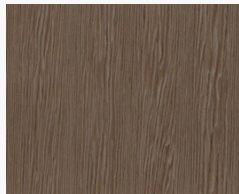
**ARMCHAIR UPHOLSTERY**  
100% POLYURETHANE  
HEAVY DUTY DURABILITY



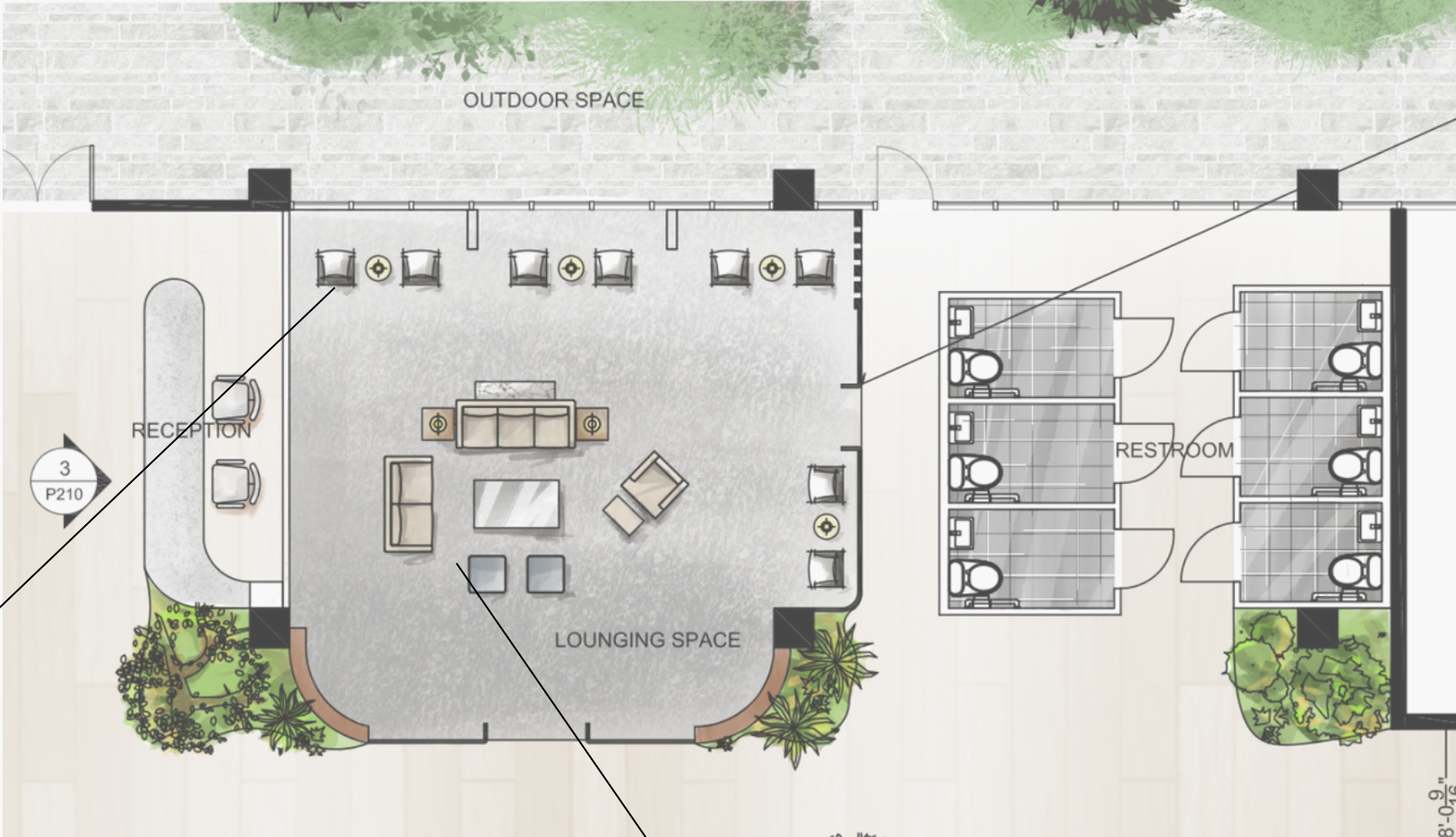
**ARMCHAIR UPHOLSTERY**  
100% VINYL WITH  
URETHANE TOP COAT  
HEAVY DUTY DURABILITY



**COFFEE TABLE**  
SEARED ASH VENEER  
CLASS 1; ABRASION  
RESISTANCE

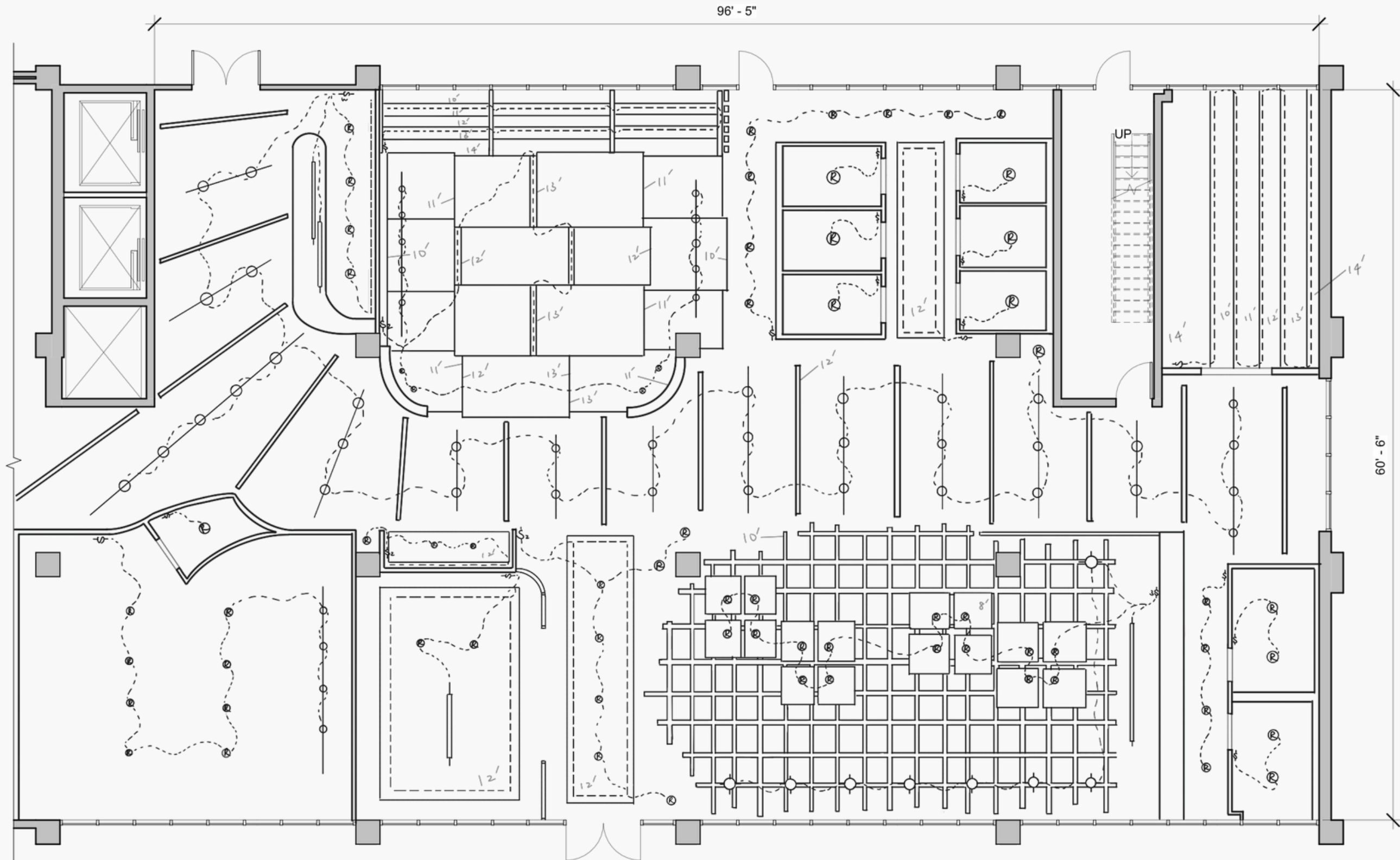


**SIDE TABLE**  
SUCUPIRA VENEER  
100% RECONSTITUTED  
WOOD VENEER





# FINAL RCP



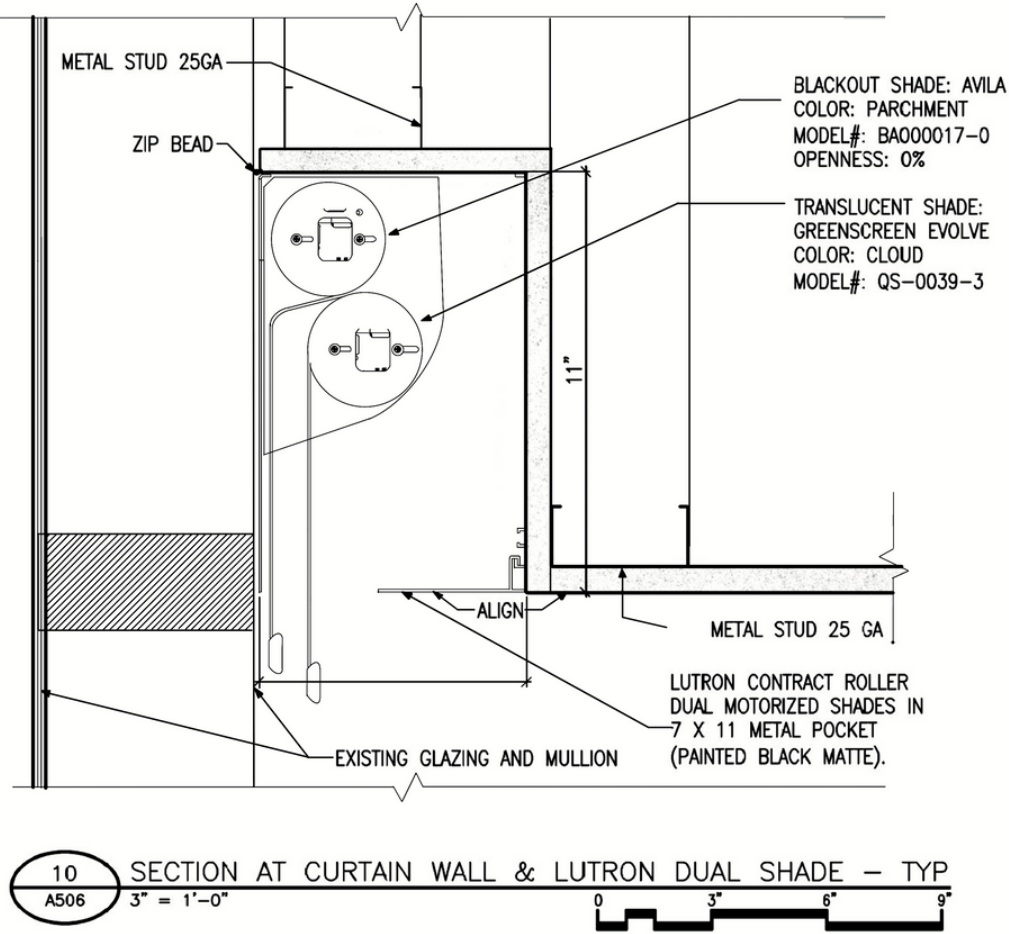
LEGEND:

- |                |    |               |        |
|----------------|----|---------------|--------|
| SWITCH         | \$ | COVE LIGHT    | ---    |
| RECESSED LIGHT | ⊗  | TRACK LIGHT   | —○—○—○ |
| PENDANT LIGHT  | ⊙  | PENDANT LIGHT | —      |



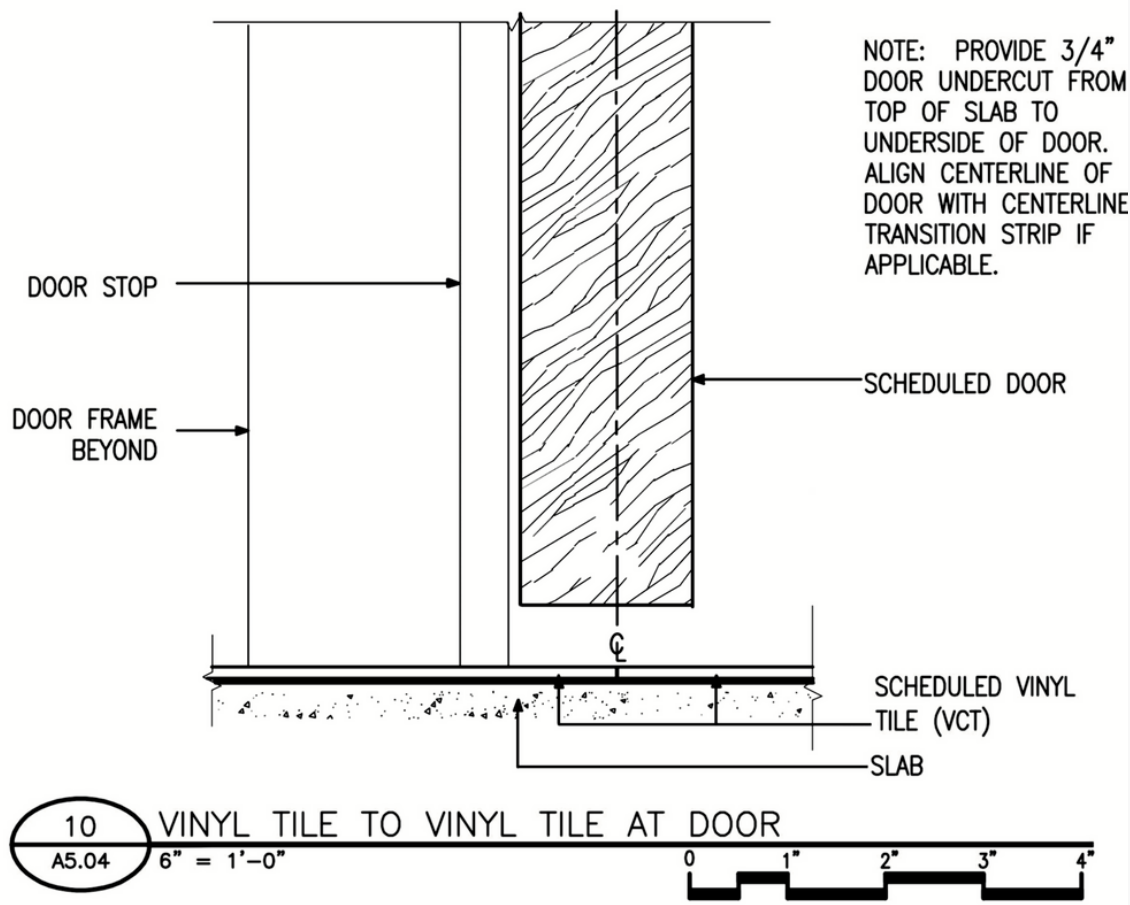


SECTION





# SECTION





# ELEVATION



2 RECEPTION DESK ELEVATION  
P210



# ELEVATION



1  
P210

KITCHENETTE ELEVATION



# ELEVATION



3  
P210

RESIDENT CORRIDOR ELEVATION



# PERSPECTIVE



EATING AREA PERSPECTIVE



# PERSPECTIVE



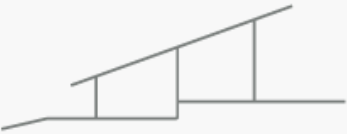
EATING AREA PERSPECTIVE



# PERSPECTIVE



LOUNGE AREA PERSPECTIVE



# /REFERENCES

P401



# REFERENCES

2010 ADA standards. UpCodes. (n.d.). <https://up.codes/viewer/ada>

Accessible toilet and bathing rooms revised: 2-11-15. (n.d.). <https://www.yakimacounty.us/DocumentCenter/View/5936/ADA-Restrooms-IBC-2012>

Gastoldi, M. (2023, August 9). Why biophilic design is crucial in the workplace and beyond. Gensler. <https://www.gensler.com/blog/why-biophilic-design-is-crucial-in-workplace>

navdeepGupta. (2022, December 1). The 60" dimension in accessible toilet rooms. Abadi Access. <http://abadiaccess.com/the-60-dimension-in-accessible-toilet-rooms/>

Onnaphotographythings. (2019, May 11). Place attachment theory. Onna Borbely. <https://onnaphotographythings.wordpress.com/2018/04/09/place-attachment-theory/>

Pintos, P. (2021, December 21). Alzheimers Village / Nord architects. ArchDaily. <https://www.archdaily.com/973948/alzheimers-villa-nord-architects>

Senior living in Atlanta, GA. Canterbury Court. (2022, October 28). <https://www.canterburycourt.org/>

Share Kanazawa. Share金沢 [シェア金沢] . (n.d.). <http://share-kanazawa.com/index.html>

Share金沢 (シェア金沢) . 株式会社 五井建築研究所. (n.d.). [https://www.goi.co.jp/building/share\\_kanazawa/](https://www.goi.co.jp/building/share_kanazawa/)

Village Landais Alzheimer. (n.d.). <https://villagealzheimer.landes.fr/en/>